

System No. SP761

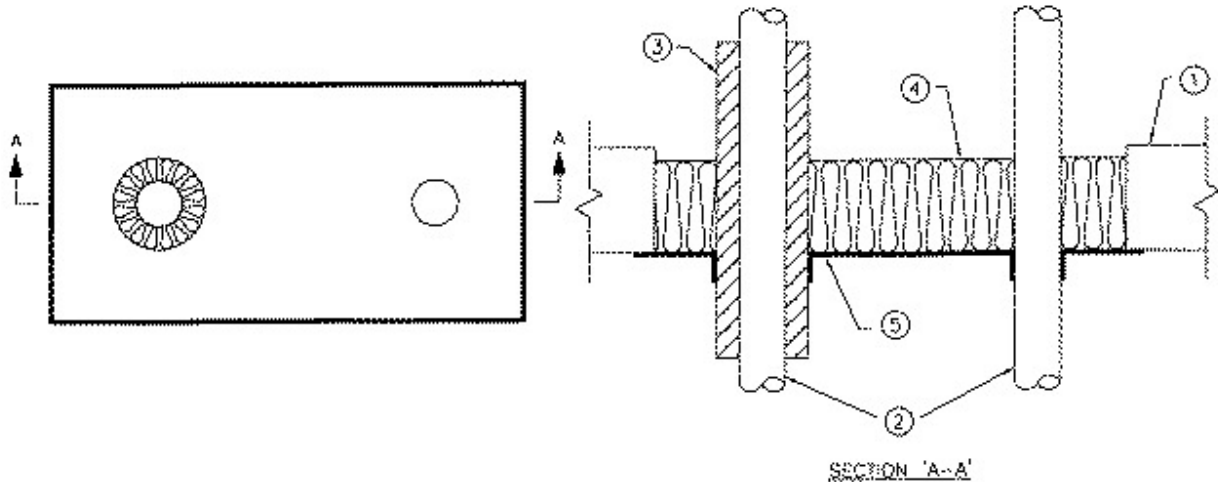
June 26, 2007

(For Horizontal or Vertical Separations)

F Rating - 1-1/2 h

FT Rating - 0 and 3/4 h (See Item 2 and Item 6)

FH and FTH Ratings - 0 h



1. **Floor or Wall Assembly** — Minimum 115 mm thick reinforced concrete floor or wall of normal-density concrete. Wall may also be constructed of nominal 200 mm thick concrete block laid up with mortar. Maximum size of opening is 305 mm by 610 mm.

2. **Copper Pipe** — Nominal 50 mm diameter (or smaller), 1.6 mm wall thickness (or heavier) copper pipe, rigidly supported on both sides of opening. A maximum of two pipes may be installed within opening. Pipes to be installed minimum 250 mm apart and 76 mm from edge of opening. When pipe is wrapped with Pipe Insulation (Item 3), FT Rating is 3/4 h. Pipe may be installed concentrically within circular openings with a maximum annular space of 75 mm.

3. **Pipe Insulation** — Pipes (Item 2) may be wrapped with nominal 25 mm thick, nominal 64 kg/m³ density, ULC labelled fibreglass pipe insulation jacketed on the outside with an all service jacket. Longitudinal joints sealed with factory-applied, self-sealing lap tape. Transverse joints secured with butt strip tape supplied with the product.

4. **Batts and Blankets** — Mineral wool insulation, Type "A/D FIREBARRIER Mineral Wool", compressed 33% and installed within the opening to a minimum depth of 100 mm flush with bottom or top surface of floor.

A/D FIRE PROTECTION SYSTEMS INC

5. **Firestop System Components** — XHJZC (Guide No. 40 U19.13). Type "A/D FIREBARRIER Seal NS" sprayed to the bottom or top of assembly to cover mineral wool to a minimum wet thickness of 5 mm. Material is applied to overlap floor slab and pipe by minimum 25 mm. For vertical separations, material is applied symmetrically to both sides of the assembly.

A/D FIRE PROTECTION SYSTEMS INC

6. **Pipe Sleeve** — (optional) - Nominal 250 mm diameter (or smaller), Schedule 40 (or heavier) steel pipe sleeve. When pipe sleeve is used, FT Rating is 0 h.