

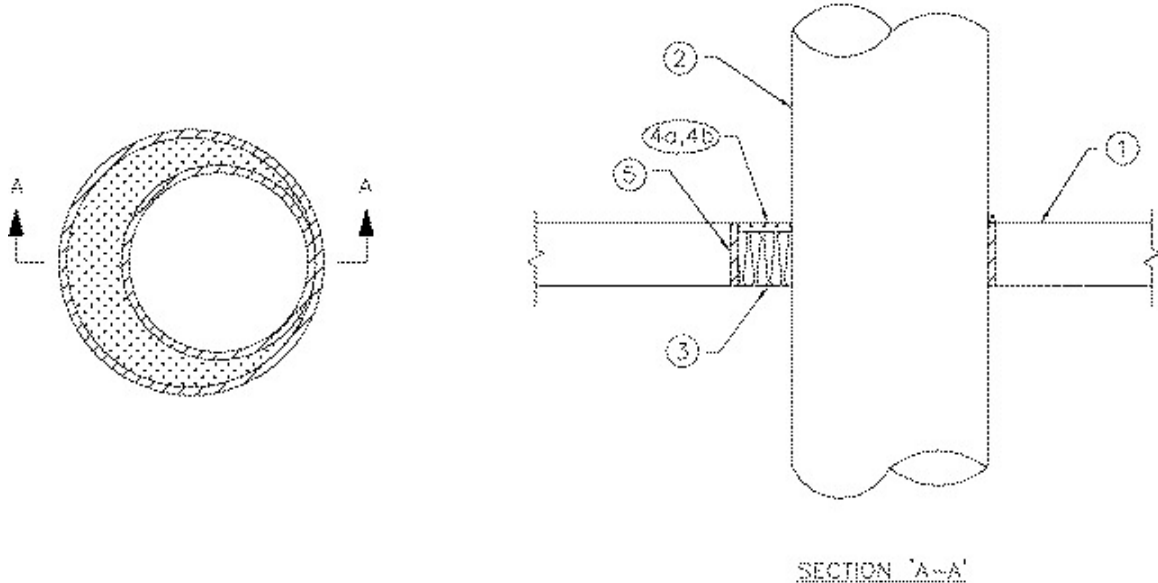
## System No. SP762

June 26, 2007

(For Horizontal or Vertical Separations)

F Rating - 2 h

FT, FH and FTH Ratings - 0 h



1. **Floor or Wall Assembly** — Minimum 115 mm thick reinforced concrete floor or wall of normal-density concrete. Floor may also be constructed of minimum 152 mm thick hollow-core precast concrete units having a fire resistance rating equal to or greater than that of the firestop system. Wall may also be constructed of nominal 200 mm thick concrete block laid up with mortar. Maximum size of opening is 508 mm diameter. When precast concrete units are used, maximum diameter of opening is 178 mm

2. **Pipe** — Nominal 400 mm diameter (or smaller), Schedule 40 (or heavier) steel pipe, or cast or ductile iron pipe, reliably supported on both sides of opening. Pipe to be installed such that the annular space is 0 (point contact) to 102 mm maximum.

3. **Batts and Blankets** — BZJZC (Guide No. 40 U18.2). Mineral wool insulation, Type "A/D Firebarrier Mineral Wool", compressed 33% and installed within the opening to a minimum depth of 100 mm recessed 13 mm from top surface of floor or both surfaces of wall. When extended pipe sleeves (item 5) are used, mineral wool insulation compressed 33% and installed within the opening to a minimum depth equal to the length of the sleeve. Mineral wool recessed 13 mm from the top of the sleeve installed in a floor or 13 mm from both sides of the sleeve installed in a wall.

### A/D FIRE PROTECTION SYSTEMS INC

4. **Firestop System Components** — XHJZC (Guide No. 40 U19.13). The firestop system shall consist of the following:

(a) Type "A/D FIREBARRIER Silicone Sealant" caulk grade, applied to top of mineral wool insulation to a minimum depth of 13 mm. In floors constructed of hollow-core precast concrete

units, silicone sealant installed symmetrically on both sides of floor. Additional material to be installed to form a crown bead of 6.4 mm at the point contact location between penetrating item and edge of opening. For vertical installations, sealant to be applied symmetrically on both sides of wall.

(b) Type "A/D FIREBARRIER Silicone Sealant S/L", for horizontal installations only (with the exception of hollow-core precast concrete units), applied to top of mineral wool insulation to a minimum depth of 13 mm. Additional caulk grade material (Item 4a) installed to form a crown bead of 6.4 mm at the point contact location between penetrating item and edge of opening .

#### **A/D FIRE PROTECTION SYSTEMS INC**

**5. Pipe Sleeve** — (optional) - Nominal 500 mm diameter (or smaller), Schedule 40 (or heavier) steel pipe sleeve cast or grouted into floor or wall assembly flush with floor or wall surfaces. The ends of the sleeve may project a maximum of 44 mm beyond both surfaces of floor or wall.