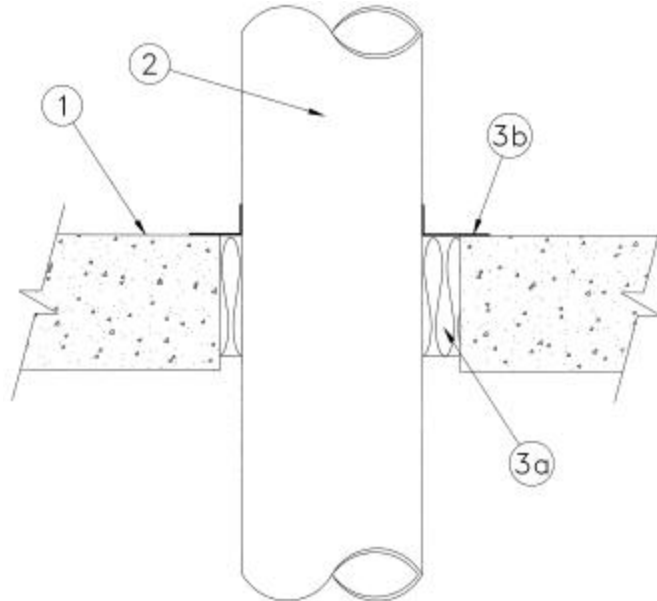


ULC SYSTEM No. SP882
(For Horizontal or Vertical Separations)

F and FH Ratings – 3 h
FT and FTH Ratings – 0 h



1. Floor or Wall Assembly – Minimum 115 mm thick reinforced low-density or normal-density (1600 - 2400 kg/m³) concrete or precast hollow core floor and/or hollow precast concrete masonry units having a fire resistance equal to or greater than that of the assembly. Wall may also be constructed of nominal 200 mm thick concrete block. Maximum diameter of opening is 203 mm.

2. Pipes or Conduits – One metallic pipe, conduit or tubing to be installed within the firestop system. Pipe, conduit or tubing to be rigidly supported on both sides of floor or wall assembly. The annular space shall be 13 mm to maximum 35 mm. The following types and sizes of pipes, conduits or tubing may be used:

(a) Steel Pipe – Nominal 610 mm diameter (or smaller) Schedule 10 (or heavier) steel pipe.

(b) Iron Pipe – Nominal 610 mm diameter (or smaller) cast or ductile iron pipe.

(c) Conduit – Nominal 152 mm diameter (or smaller) steel electrical metallic tubing or steel conduit.

(d) Copper Pipe or Tubing – Nominal 152 mm diameter (or smaller) Type L (or heavier) copper tubing.

3. Firestop System Components – (Guide No. 40 U19.13).

(a) Batts and Blankets – Type "A/D Firebarrier Mineral Wool" compressed 33% and installed within the opening to a minimum depth of 100 mm and even with the top surface of slab or both sides of wall.

• **(b) Sealants** – Type "A/D Firebarrier Seal NS" applied to the top of the mineral wool insulation to a minimum wet depth of 5 mm. Additional material is applied to overlap the concrete and pipe surface by 25 mm. For vertical installations, sealant to be applied on both side of wall.

A/D FIRE PROTECTION SYSTEMS INC.