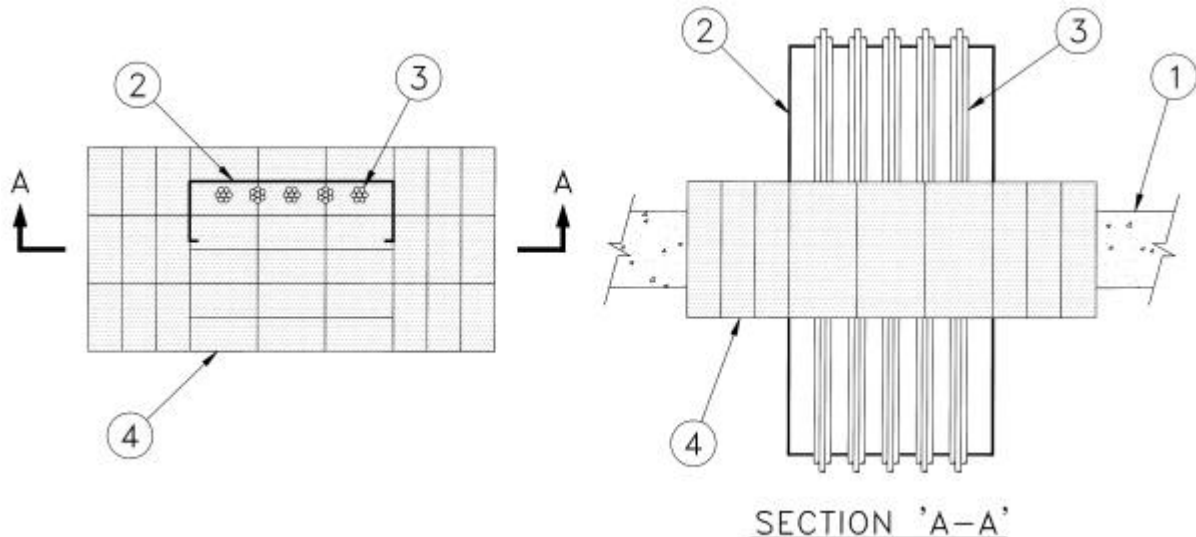


SYSTEM No. SP918
(For Horizontal or Vertical Separations)

F and FH Ratings – 3 h
FT and FTH Ratings – 1-1/2 h



1. Floor or Wall – Minimum depth or thickness as necessary for required grade of fire separation but not less than 115 mm. Normal-density ($2400 \pm 50 \text{ kg/m}^3$) concrete floor or wall, or nominal 200 mm concrete block wall. Maximum size of opening 305 mm by 610 mm. For opening in concrete block wall, concrete or mortar shall be used to create a solid surround to the opening.

2. Cable Tray – Maximum 305 mm wide by 92 mm deep open ladder cable tray formed from 1.22 mm galvanized steel and with rungs 104 mm wide and spaced 254 mm OC. A maximum of one cable tray per opening with a minimum separation of 38 mm between cable tray and periphery of opening.

3. Cables – Maximum cable fill of 2-1/2%. The following type of cables may be used:

- (a) Maximum 4 bundles of 7 cables, each with 3 pair 24 AWG Type D, telephone cables.
- (b) Maximum 2 lengths of double stranded fibre optic cables, 3.0 mm by 6.1 mm.
- (c) Maximum 1 length of co-axial cable, 6.1 mm OD, 22 AWG solid copper conductor.
- (d) Maximum 1 length of E1189637, 24 AWG Type CMR or MPR, FT4 ABJI 289 861.

• **4. Firestop System Components** – (Guide No. 4o U19.13). "A/D FIREBARRIER Pillows", tightly packed into the opening to a minimum compression of 25% and installed in accordance with manufacturer's instructions. Pillows to be installed vertically within the opening in floor and horizontally within the opening in wall. Pillows to be installed centred within floor or wall.

A/D FIRE PROTECTION SYSTEMS INC.