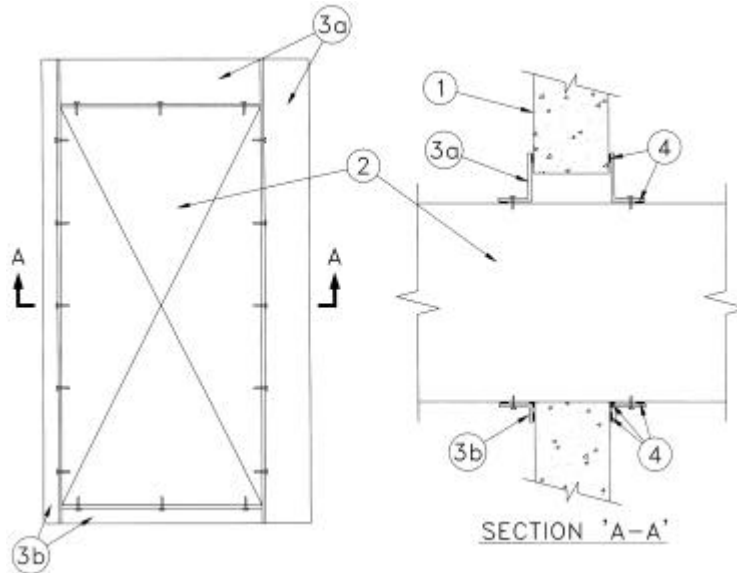


**SYSTEM No. SP988
(For Vertical Separation)**

F Rating – 2 h
FT, FH and FTH Ratings – 0 h



1. Wall Assembly – Minimum 156 mm thick lightweight or normal-density concrete. Wall may be constructed of any nominal 200 mm thick concrete block. Maximum size of opening is 1016 mm by 508 mm.

2. Duct – Maximum 457 mm by 965 mm galvanized steel duct, 0.71 mm in thickness. Maximum separation of 51 mm between duct and periphery of opening. Duct to be rigidly supported on both sides of the wall.

3. Steel Angle –

(a) Nominal 75 mm by 50 mm by 1.5 mm steel angle installed on the two faces of the duct separated from wall using sheet metal screws between the 50 mm leg of the angle and the duct, installed a maximum of 110 mm OC.

(b) Nominal 50 mm by 25 mm by 1.5 mm steel angle installed on the two faces of the duct in contact with the wall, using sheet metal screws between the 50 mm leg of the angle and the duct, installed a maximum of 110 mm OC.

• **4. Firestop System Components** – (Guide No. 40 U19.13) – Type “A/D FIREBARRIER Silicone Sealant” installed with 6.4 mm bead on each leg of steel angle and compressed between angle and duct and angle and wall. Additional 6.4 mm bead of sealant installed as crown bead between duct and wall at point of contact.

A/D FIRE PROTECTION SYSTEMS INC.