

BXUVC.F817
Fire-resistance Ratings

[Page Bottom](#)

BXUVC - Fire-resistance Ratings

[See General Information for Fire-resistance Ratings](#)

Design No. F817

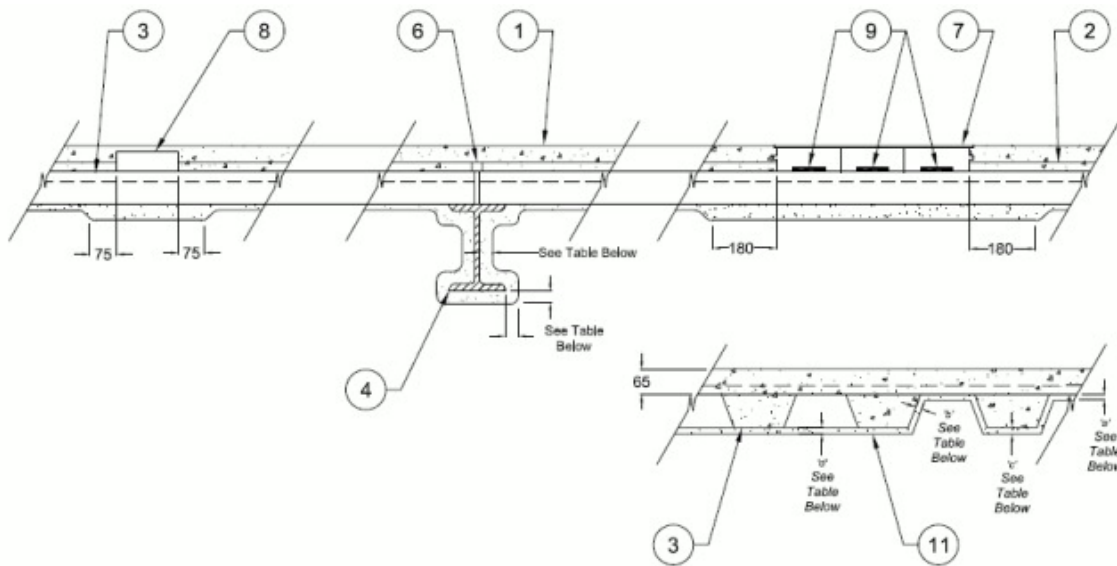
October 04, 2016

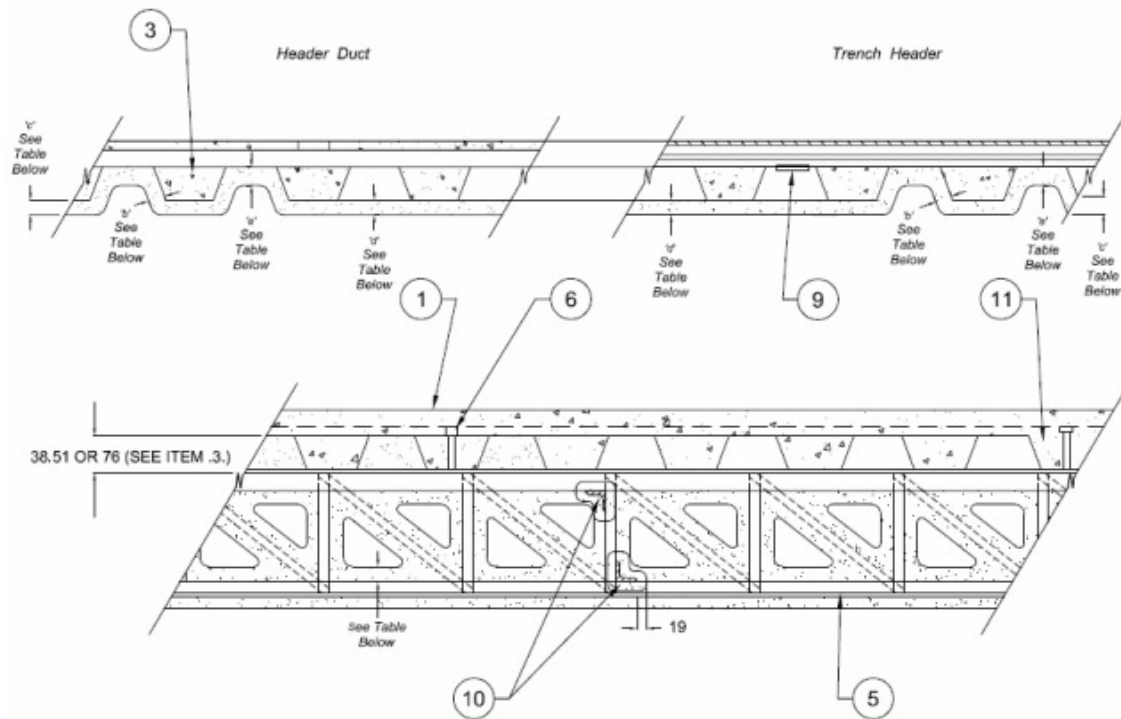
Restrained Assembly Rating - 3, 2 and 1-1/2 h (See Table Below)

Unrestrained Assembly Rating - 1-1/2 h

Unrestrained Beam Rating - 1 and 1-1/2 h (See Table Below)

Load Restricted — The steel beam (see Item 4) and the assembly with the steel beam evaluated in accordance with Working Stress Design methods, for use under Limit States Design methods; refer to information under Guide BXUVC. (The Load Restriction in accordance with the Working Strength Design methods is not applicable to the steel joist (see item 5) or to the assembly with a steel joist)





1. **Normal-Density or Low-Density Concrete** — Normal-density concrete, carbonate or siliceous aggregate 2420 ± 50 kg/m³ density, 21 MPa nom compressive strength. Low-density concrete, expanded shale, clay, or slate aggregate by rotary kiln method, 184 ± 50 kg/m³ density, 21 MPa nom compressive strength, or expanded blast furnace slag aggregate, 1955 ± 50 kg/m³ density, 21 MPa nom compressive strength.

2. **Wire Fabric** — 152x152 P18.7/P18.7 steel wire.

3. **Steel Floor Units** — (CHWXC). Composite or noncomposite floor units, all 0.91 mm thick fluted sections or alternating one 915 mm or 610 mm wide, 0.91 mm fluted sections to a max of one 610 mm wide 0.91/0.91 mm cellular section. Units welded to supports with 20 mm daim plug welds spaced on every other trough. Adjacent units crimped along joints at 450 mm OC. See individual manufacturer's listing for those profiles that may be used in this design. Thickness of fluted sections may be reduced to 0.76 mm. See individual manufacturer's listing for those profiles that may be used in this Design.

AGWAY METALS INC

GROUPE CANAM INC

NEW MILLENNIUM BUILDING SYSTEMS L L C

SAMSON METAL LTD

VICWEST INC

WESTFORM METALS

4. **Beam** — W200x31, min size.

5. **Joist** — 305 mm deep, open-web steel joist, 16 kg/m min size, designed in accordance with the relevant Limit State Design provisions of Part 4 of the National Building Code of Canada. For composite design, use Item 6 below.

6. **Shear Connectors** — (Optional) - Studs, 13 mm daim by 100 mm long, headed type. Welded to top flange of joist or beam through the deck.

7. **Trench Header** — Housing constructed of steel and trench header provided with metal edge screeds.

8. **Heater Duct** — Housing constructed of steel.

9. **Access Openings** — As required, with grommets.

10. **Bridging** — Designed in accordance with the relevant provisions of Part 4 of the National Building Code of Canada, protected with 19 mm min "A/D Type FP" spray-applied fire-resistive material (Item 11a), with a min average density of 165 kg/m³, or "A/D Type 5" spray-applied fire-resistive material (Item 11b), with a min average density of 272 kg/m³.

11(a). **Spray-Applied Fire-Resistive Material** — (See table below) - (CHPXC). "A/D Type FP" fibre for application with or without adhesive to steel surfaces in thicknesses indicated above and in the following table. Fibre to have a min average dry density of 165 kg/m³ with a min individual value of 145 kg/m³. Area between fluted deck and top flange of beam or joist to be filled. For method of density determination, refer to General Information Section under heading "Fire Resistance Ratings". Steel surfaces must be clean and free of dirt, loose scale and oily deposits.

A/D FIRE PROTECTION SYSTEMS INC

Restrained Assembly Rating, h	Unrestrained Assembly Rating, h	Unrestrained Beam Rating, h	Deck Protection - General					
			(a) Crests, mm	(b) Sides, mm	(c) Valleys, mm	(d) Cellular Plate, mm	Protection Beam mm	Joist mm
3	—	1-1/2	17	14	6	14	21	38
2	—	1	13	11	6	11	13	25
1-1/2	—	1	10	10	6	10	13	25
—	1-1/2	1-1/2	10	10	6	10	21	38

Assembly Rating, h	Deck Protection - Under Trench Header			
	(a) Crests, mm	(b) Sides, mm	(c) Valleys, mm	(d) Cellular Plate, mm
3	38	33	29	29
2, 1-1/2	32	24	24	33

Assembly Rating, h	Deck Protection - Under Header Duct			
	(a) Crests, mm	(b) Sides, mm	(c) Valleys, mm	(d) Cellular Plate, mm
3	40	37	32	32
2, 1-1/2	25	25	25	22

11(b). **Spray-Applied Fire-Resistive Material** — (see table below) - (CHPXC). "A/D Type 5" spray-applied fire-resistive material for application with or without adhesive to steel surfaces in thicknesses indicated above and in the following table (to be used on fluted steel floor units only). Mixture to have a min average dry density of 272 kg/m³ with a min individual value of 248 kg/m³. Area between flutes and top flange of beam or joist to be filled. For method of density determination, refer to General Information Section under heading "Fire Resistance Ratings". Steel surfaces must be clean and free of dirt, loose scale and oily deposits.

A/D FIRE PROTECTION SYSTEMS INC

Restrained Assembly Rating, h	Unrestrained Assembly Rating, h	Unrestrained Beam Rating, h	Deck Protection - General				
			(a) Crests, mm	(b) Sides, mm	(c) Valleys, mm	Protection Beam, mm	Joist mm
2	—	1	13	11	6	13	25
1-1/2	—	1	10	10	6	13	25
—	1-1/2	1-1/2	10	10	6	21	38

Assembly Rating, h	Deck Protection - Under Trench Header		
	(a) Crests, mm	(b) Sides, mm	(c) Valleys, mm
2, 1-1/2	32	24	24

Assembly Rating, h	Deck Protection - Under Trench Header		
	(a) Crests, mm	(b) Sides, mm	(c) Valleys, mm
2, 1-1/2	25	25	25

Last Updated on 2016-10-04

[Questions?](#)

[Print this page](#)

[Terms of Use](#)

[Page Top](#)

Copyright © 2016 Underwriters Laboratories of Canada Inc.

When the UL Leaf Mark is on the product, or when the word "Environment" is included in the UL Mark, please search the [UL Environment database](#) for additional information regarding this product's certification.

The appearance of a company's name or product in this database does not in itself assure that products so identified have been manufactured under ULC's Follow-Up Service. Only those products bearing the ULC Mark should be considered to be Listed and covered under ULC's Follow-Up Service. Always look for the Mark on the product.

ULC permits the reproduction of the material contained in the ULC Online Directories subject to the following conditions: 1. The Guide Information, Designs and/or Listings (files) must be presented in their entirety and in a non-misleading manner, without any manipulation of the data (or drawings). 2. The statement "Reprinted from the ULC Online Directories with permission from Underwriters Laboratories of Canada Inc." must appear adjacent to the extracted material. In addition, the reprinted material must include a copyright notice in the following format: "Copyright © 2016 Underwriters Laboratories of Canada Inc."

An independent organization working for a safer world with integrity, precision and knowledge.

